



Light Communications Alliance

Mission



Motivation: Delivering the benefits of ubiquitous Light Communications to serve people & technologies, requires a far-reaching & coherent ecosystem working at a determined pace.

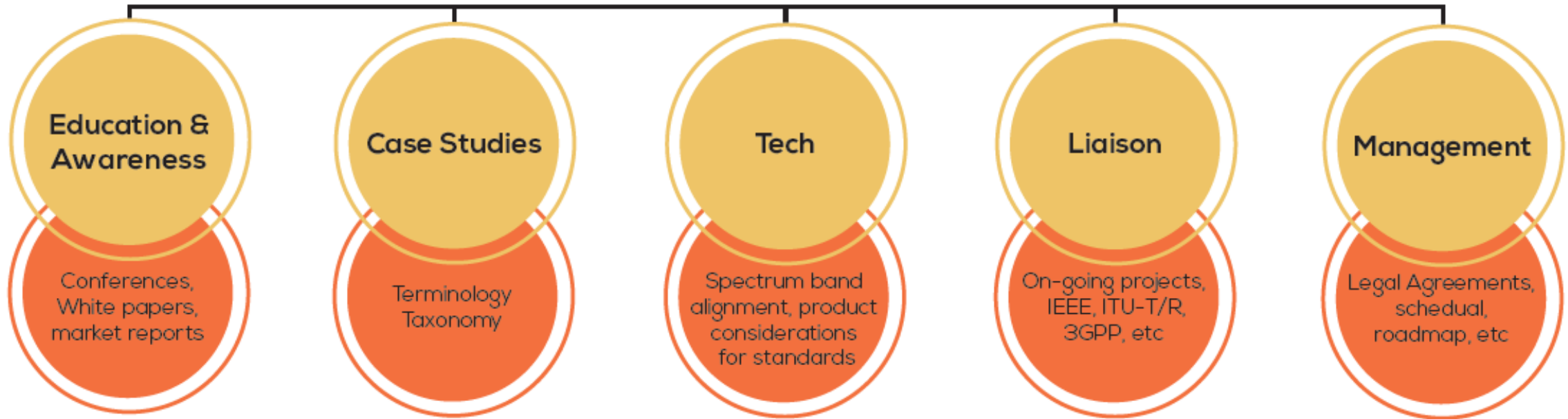
Mission: Driving a consistent, focused & concise approach to market education that will highlight the benefits, use cases & timelines for Light Communications

How: Aligning leaders across every industry developing or envisaging business models using Light Communication systems & technologies by defining a standard of education in an efficient communication & co-operation frame.

Envisioned Structure

STRUCTURE

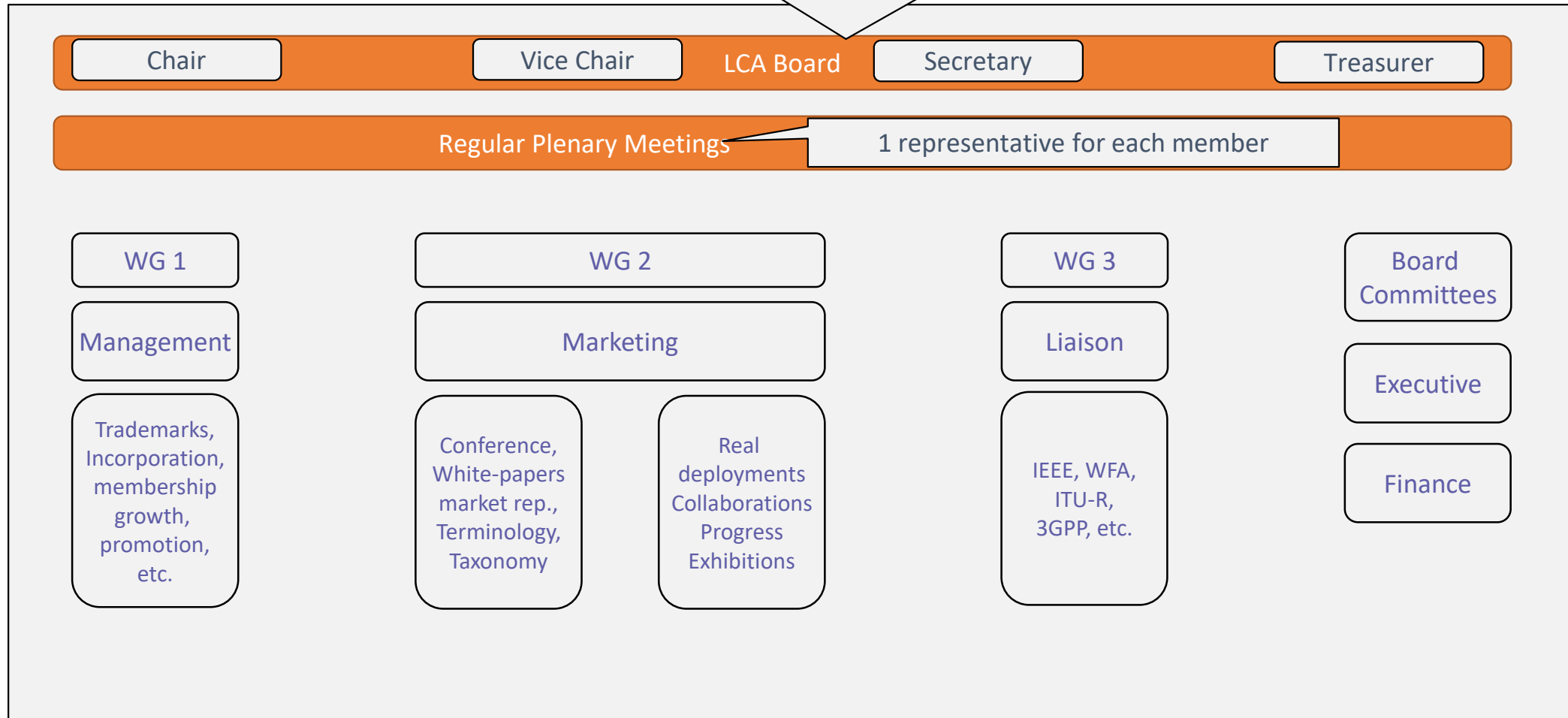
LIGHT COMMUNICATIONS





Current Structure

Founding members, 1 director per strategic member
(max. 20 directors)



Planned work



		WG 1	WG 2 - Marketing				WG 3
		Management	Events	White-papers	Market Reports	Case-studies	Liaison
2019	3Q	Membership growth plan Face-to-face kick-off meeting	Gitex (Dubai)	Taxonomy			
	4Q	TM registration		LiFi for Telecom Operators			IEEE & Wi-Fi Alliance
2020	1Q	On-board CEO				Case-1	
	2Q		LiFi-Event-1 (Global)	Wi-Fi and LiFi coexistence			
	3Q			Near-term use-cases		Case-2	ITU-R
	4Q				Report-1		
2021	1Q	Event org.		Commercial challenges		Case-3	WFA integration
	2Q		LiFi-Event-2 (Global)				3GPP link
	3Q			Technical challenges		Case-4	802.11 LC Draft 2
	4Q				Report-2		Start WFA certification test development
2022	1Q	Event org.		WiGig Adoption		Case-5	
	2Q		LiFi-Event-3 (Global)				
	3Q			Spectrum need and data density		Case-16	802.11 LC PUBLISHED
	4Q				Report-3		WFA – LiFi Certification
2022	1Q	Event org.				Case-7	



Mode of operation

Annual members fees is € 5,000

Plenary meetings

- 1 physical meetings per year, 1 day duration
- Leadership elections
- All members + invited guests
- Status update from WGs, decisions & approvals, general information

WG meetings

- At WG Chair discretion if physical or conference call
- Frequency and duration determined by WG Chair (likely 2 WG meetings between plenaries)
- Open to all members

Board meetings

- 4 meetings per year
- At Chair discretion if additional meetings are needed
- Debrief from the management
- Decisions on cohesion and programme for growth

- LCA is contribution driven and open to any new work provided there are at least 3 Board members to support the activity
- White papers and position papers will list all members as co-authors unless there is a submitted objection